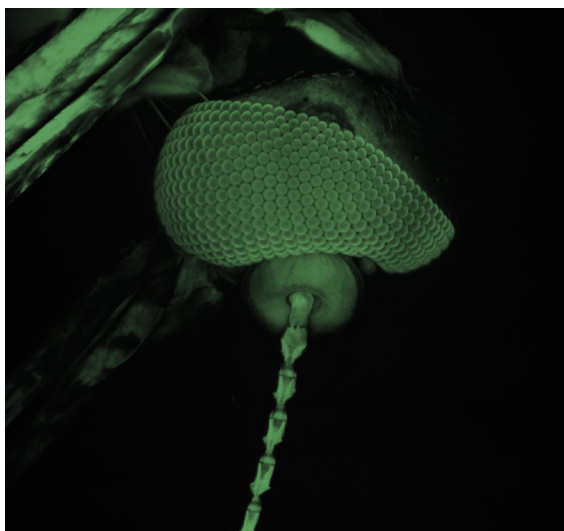
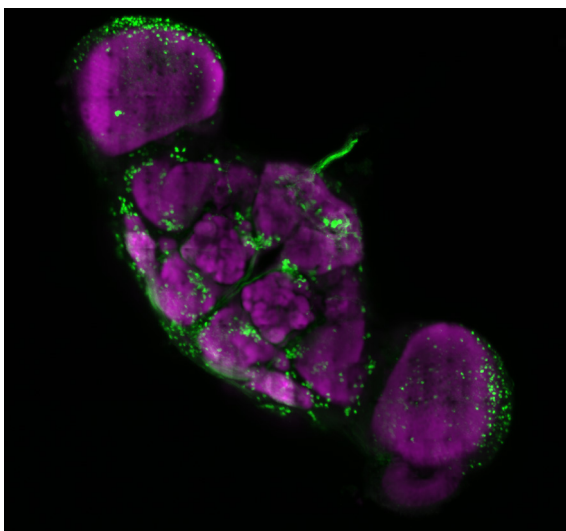
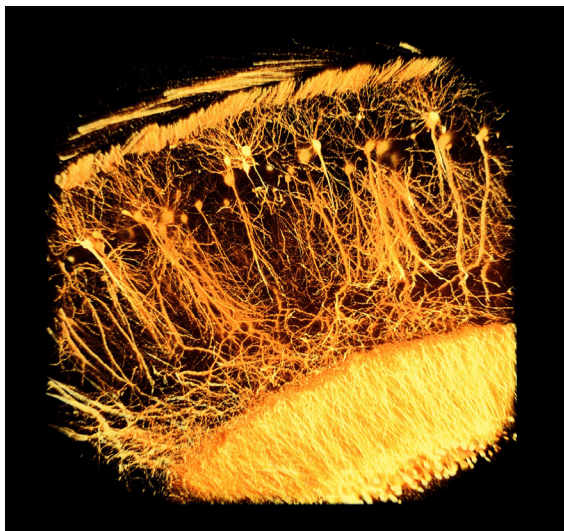
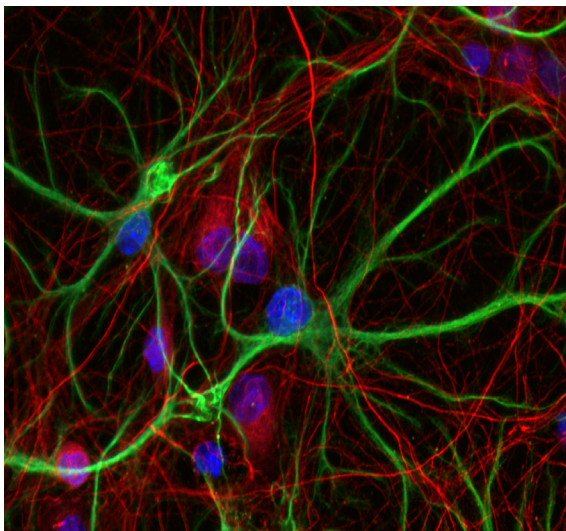
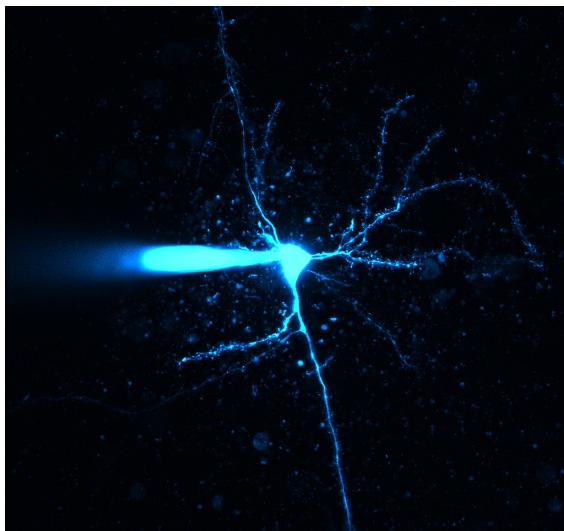
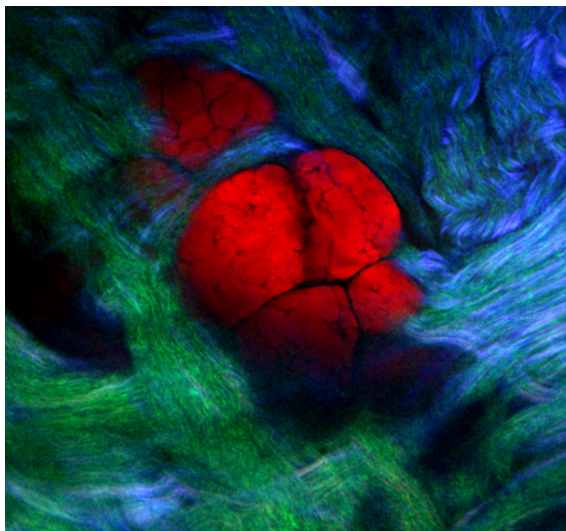


ThorImage[®]LS



Imaging Software

ThorImage[®]LS is an intuitive, powerful program with diverse functionality and a customizable interface, providing flexible control of Thorlabs' imaging systems.

THORLABS

ThorImage[®]LS Capabilities

ThorImageLS is a comprehensive software tool for managing Thorlabs' Bergamo[®] multiphoton microscopes, Veneto[®] inverted microscopes, Cerna[®] hyperspectral and epi + DIC rigs, and confocal microscopes, as well as supplementary products, including the Tiberius[®] laser, scientific cameras, and sample scanning stages. Use one integrated software suite for every step of your imaging experiment.

Deep Physiological Scans

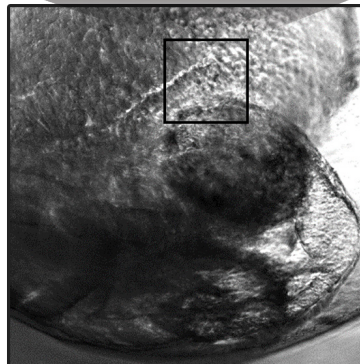
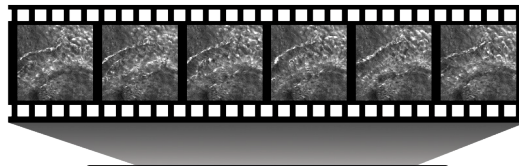
Use Built-In Controls for Scanning Large 3D Volumes:

- ◆ For deep, high-speed 3D imaging, coordinate between long-travel stepper control and high-resolution piezo motion to traverse large ranges in Z at user-defined steps.
- ◆ Compensate for tissue scatter with laser power ramping as a function of depth, creating an even signal response throughout a 3D scan.

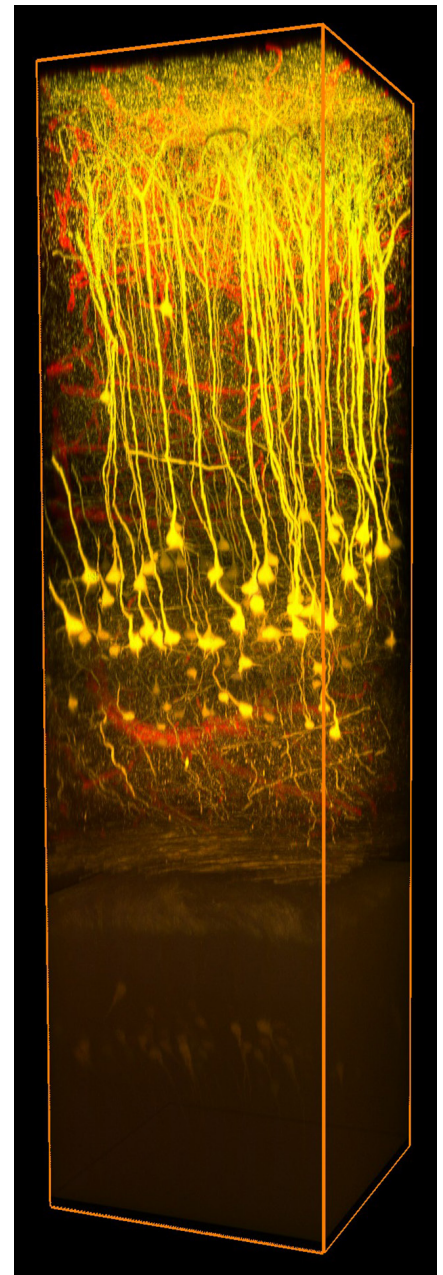
High-Speed *In Vivo* Acquisition

Easily Perform *In Vivo* Imaging via Image Streaming, Time Series, and Z-Stack Acquisition:

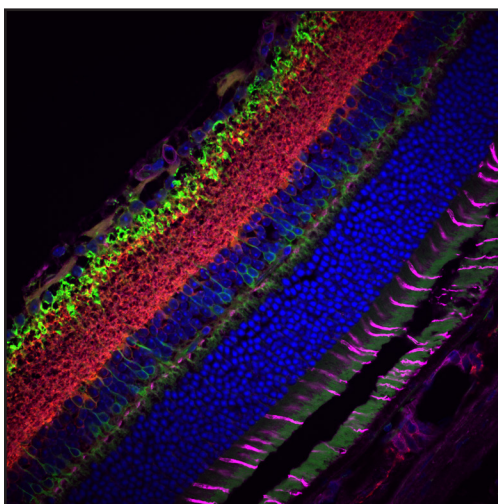
- ◆ Software Supports Both Full-Frame and Fast-Frame-Rate Laser Scanning Image Acquisition
- ◆ Data Immediately Stored to the Hard Drive
- ◆ Experiment Sizes Constrained Only by the Size of Available Hard Drive Space
- ◆ High-Speed Volumetric Imaging Coordinates Fast Z Piezo Travel with Data Collection
- ◆ Store, Visualize, and Analyze Images Simultaneously with Acquisition at Video Frame Rates



Widefield Image with Fast Frame Rate Images (42 fps) of *In Vivo* Zebrafish Embryo Heart



1.2 mm *In Vivo* Deep Brain 3D Image Stack^a



Cell Layers in a Mouse Retina^b

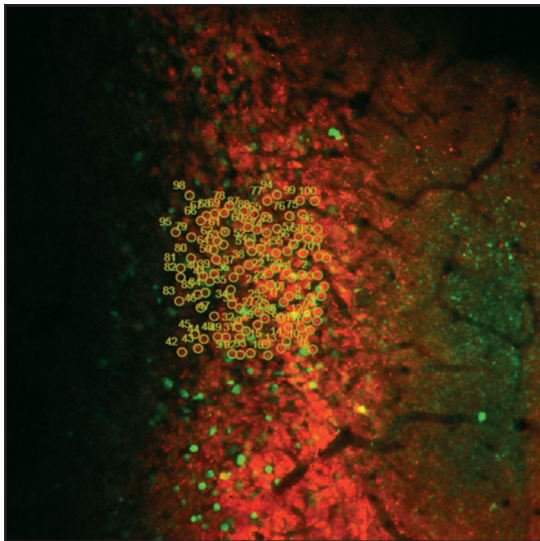
Multi-Modal Imaging

Utilize One Software Package for Multiple Imaging Modalities to Capture Feature-Rich Samples:

- ◆ Supported Imaging Modalities:
 - Laser Scanning (Resonant-Galvo-Galvo, Galvo-Galvo, and Galvo-Resonant): Fluorescence, Dot, Second Harmonic Generation (SHG), and Third Harmonic Generation (THG)
 - Widefield: Fluorescence, Brightfield, DIC, Darkfield, and Phase Contrast
- ◆ Software Workflow Customizable for Each Modality
- ◆ Simultaneously Obtain Laser-Scanned Images Co-Registered With Widefield Images
- ◆ Acquire External Camera Data Synced with Microscopy Image Data to Correlate Image Features with Specimen Behavior

Photostimulation

For Optogenetics Research Requiring Patterned Light Control, Choose from Multiple Techniques:



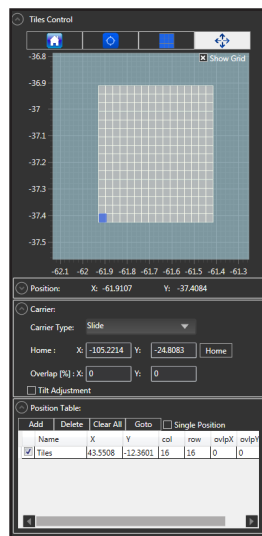
Simultaneous Photostimulation of 100 Cells Co-Expressing GCaMP6f (Green) and C1V1 (Red)²

- ◆ SLM Holography
 - Simultaneously Activate Hundreds of Cells
 - Combined SLM and Galvo-Galvo Control Enable Users to Spread Laser Activation Over Whole Cells to Ensure More Reliable Stimulation
 - Classify Groups of Cells to Activate Independently
 - Synchronize with High-Speed Imaging
 - Random Epoch Control
- ◆ Galvo Region of Interest (ROI)
 - Serially Stimulate Thousands of Cells
 - Choose from a Variety of ROI Types and Scan Patterns
 - Tightly Synchronize with Imaging to Maximize PMT Lifetime
- ◆ Full Field
 - Compatible with LEDs and Laser Configurations
 - Configurable Stimulation Timing
 - Pre- or Post-Imaging Frames
 - Inter-Frame Stimulation

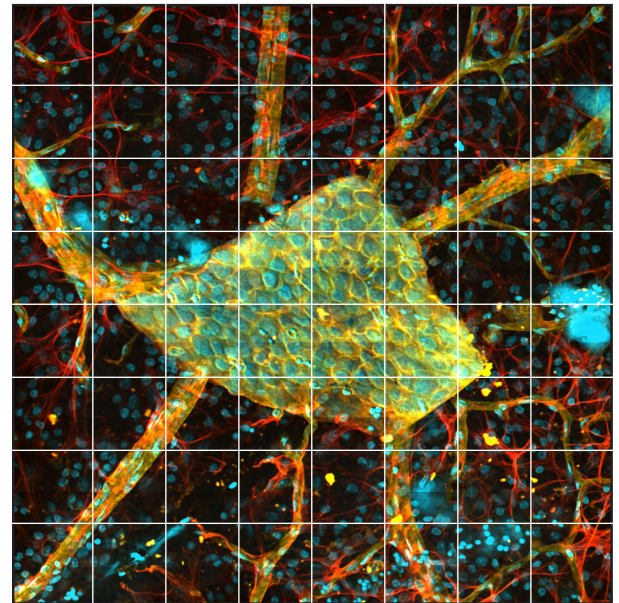
Large-Area Mosaic Tiling

Capture Large Tiled Images to View Entire Samples at High Resolution:

- ◆ Selectable and Configurable Tiles
- ◆ Overlap Tiles in X and Y to Aid Analysis and Post-Processing in Fiji / ImageJ
- ◆ Multiplex with Time Series and Z Stacks
- ◆ Enable Tilt Adjustment to Correct for Samples Not Orthogonal to the Objective



The Tiles Control Panel sets the number of tiles, overlap, and angular correction.



Stitched Confocal Fluorescence Image of Rat Retina Stained with DAPI, Alexa Fluor[®] 555 and Alexa Fluor[®] 633³

Image Credits

Cover Page:

Top Left: Coherent anti-Stokes Raman scattering (CARS, red), second harmonic generation (SHG, green and purple), and sum frequency generation (SFG, blue) image of a chicken heart.

Top Right: Patch-clamped neuron. Image courtesy of the 2016 Neurobiology Course at the Marine Biological Laboratory, Woods Hole, MA.

Middle Left: Neurofilaments (green), glial filaments (red), and DAPI nucleic stain (blue) from hippocampus.

Middle Right: Two-photon image of neurons expressing thy1-YFP in a cleared region of the dentate gyrus. Courtesy of the 2017 Imaging Structure and Function in the Nervous System Course at Cold Spring Harbor Laboratory, Cold Spring Harbor, NY.

Bottom Left: Confocal mosaic image of GFP and NC82 antibodies in a fly brain. Sample courtesy of Dr. Berry Dickson, Janelia Research Campus, HHMI, Ashburn, VA.

Bottom Right: Confocal Z-stack maximum intensity projection of a mosquito eye.

From the Brochure Contents:

- a. Courtesy of Dr. Hajime Hirase and Katsuya Ozawa, RIKEN Brain Science Institute, Wako, Japan.
- b. Sample courtesy of Dr. Robert Fariss, Biological Imaging Core, National Institutes of Health, Bethesda, MD.
- c. Courtesy of Lloyd Russell, Dr. Adam Packer, and Prof. Michael Häusser, University College London, United Kingdom.
- d. Courtesy of Dr. Jennifer Kielczewski, National Eye Institute, National Institutes of Health, Bethesda, MD.
- e. Courtesy of Dr. Michael Dickinson and Dr. Ivo Ros, California Institute of Technology, Pasadena, CA.

Explore the Workspace

Automated Image Capture

Program routine image acquisitions:

- ◆ Create Command Sequences Using a Drag-and-Drop Interface
- ◆ Run Fiji/ImageJ Macros
- ◆ Execute MATLAB® Scripts

Signal Generator

Custom programmable TTL output trigger for triggering external stimulation equipment based on:

- ◆ Time
- ◆ Bergamo Generated Triggers
- ◆ Custom Input Trigger

Multi-Modality Support

Capture a data set using multiple imaging modalities without jumping between applications.

- ◆ Quickly Switch Modalities to Reduce Wait Times Over a Single Run
- ◆ Customize Capture Layouts and Settings for Each Modality

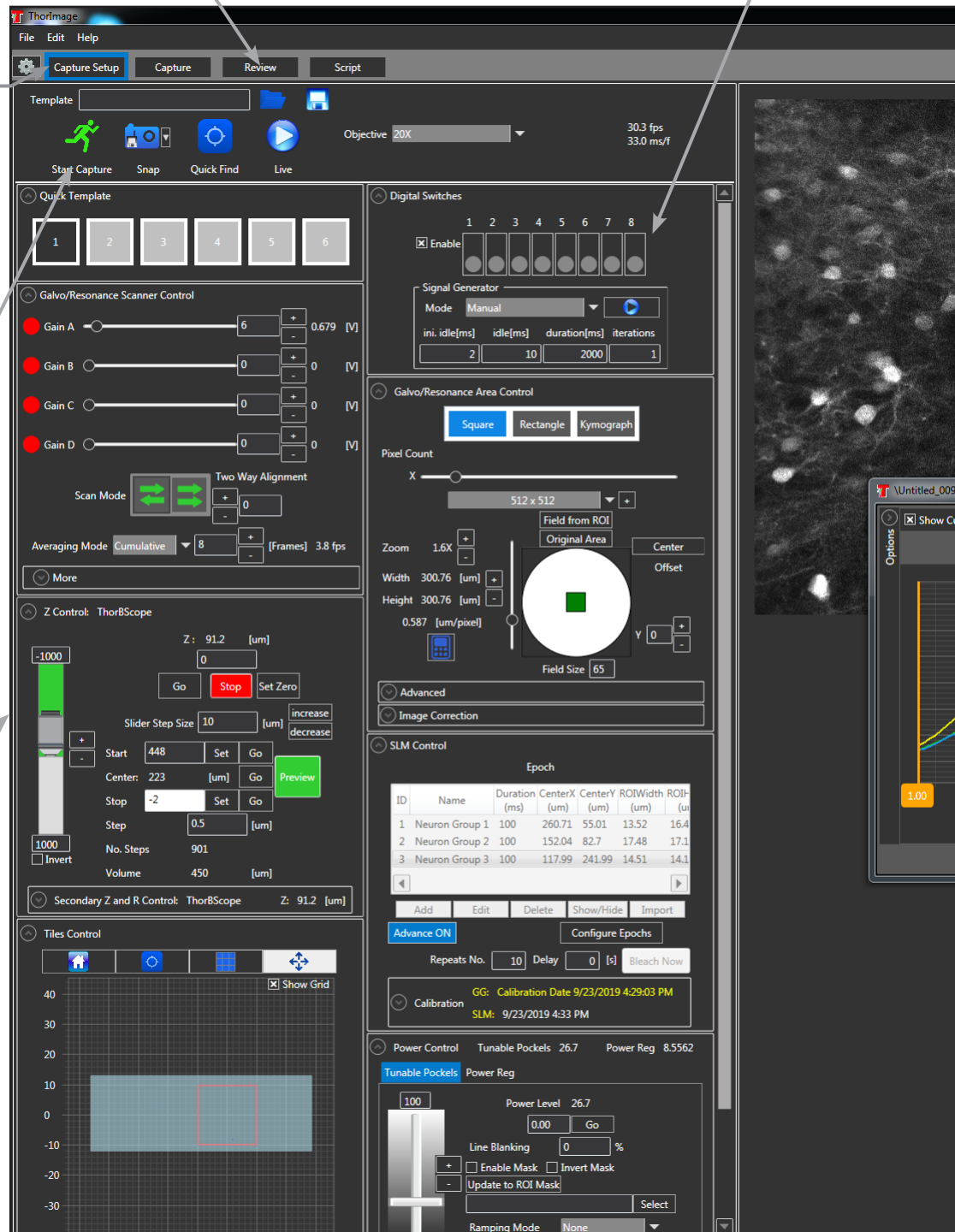
Ease of Use

Intuitive user interface design provides easy access to all necessary hardware control elements.

Customizable Workspace

Visualize only the settings relevant to each aspect of your individual experiment.

- ◆ Customizable Multi-Column Layout
 - Save by User
 - Save by Imaging Modality
- ◆ User-Defined Keyboard Shortcuts
- ◆ Multi-User Settings Saved for Shared Workstations



Screenshot of the Capture Setup tab during an SLM holographic photostimulation experiment using our Bergamo® Multiphoton Microscope.

Coordinated Imaging and Experimentation

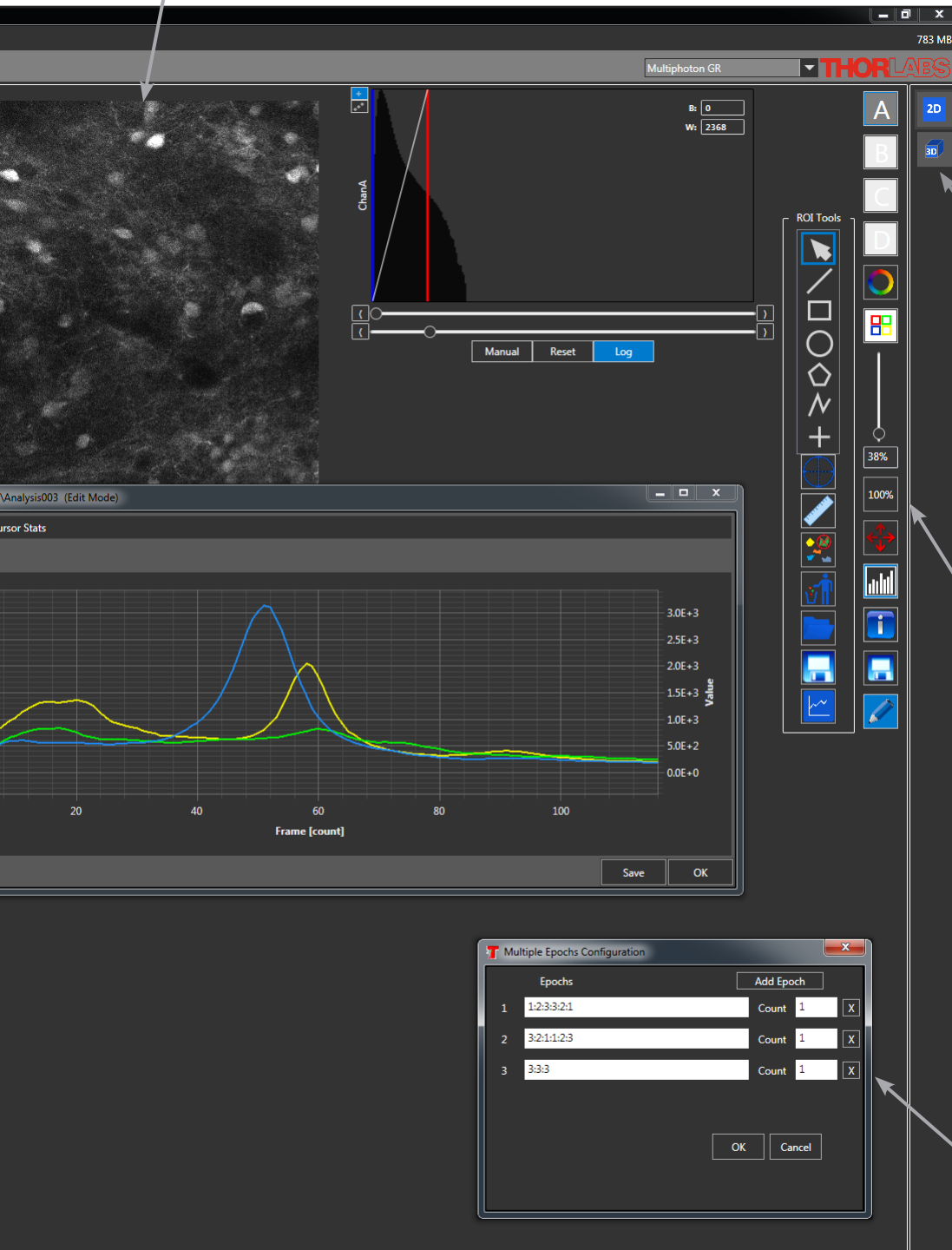
Use one software package to control and synchronize experimental processes with captured data.

◆ Applications

- Photoactivation
- Laser-Power-Ramped Z Stacks

◆ Software Features

- ThorSync™
- Third-Party Script Compatibility
- Directly Manipulate Open-Source Software Code



Intuitive Visualization

Once acquired, easily explore multi-dimensional datasets.

- ◆ Simultaneously Scan Through 2D Slices in the X-Y, X-Z, and Y-Z Planes
- ◆ Render and Rotate 3D Volumes to View the Complete Sample and Identify Non-Orthogonal Features

Real-Time ROI Analysis

Select an ROI to perform real-time calculations simultaneously with image acquisition.

- ◆ Multiple ROI Shape Options
- ◆ Intensity as a Function of Time
- ◆ Mean, Minimum, and Maximum Intensity
- ◆ Standard Deviations
- ◆ Arithmetic Operations
 - dF/F
 - Ratiometric Imaging

SLM Multiple Epoch Control

Execute SLM Patterns in pre-defined order.

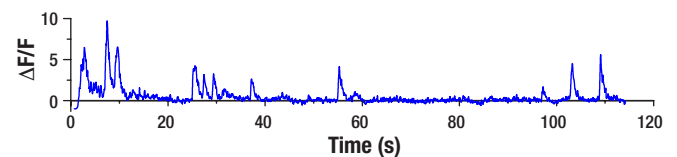
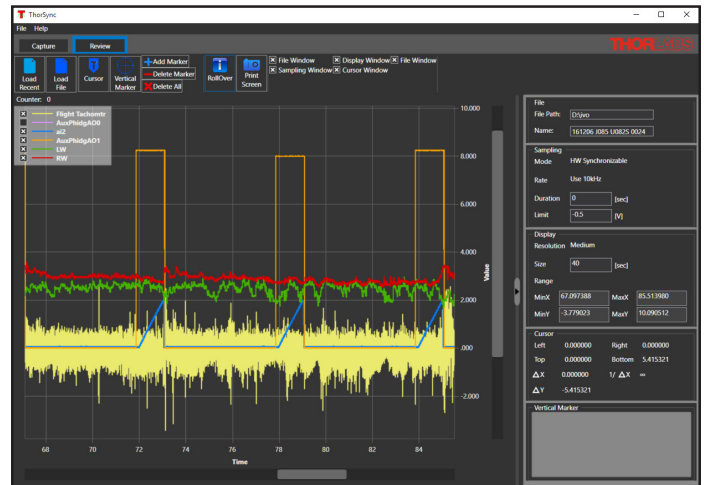
Integrated Acquisition

To provide a flexible user experience, our team has designed ThorImageLS to easily communicate with external hardware and third-party software. The application code is also freely available for complete software customization.

ThorSync™

Integrate ThorImageLS with ThorSync, our supplemental software program designed to record and generate digital/analog signals for timing-critical applications. This enables synchronization of data acquisition with external equipment.

- ◆ Create Output Signals to Trigger Image Acquisition, Experiment Stimulation, and Auxiliary Equipment
- ◆ Create or Respond to Signals from Behavioral Devices (e.g. Virtual Reality Environments)
- ◆ Customize Display Settings to Improve Signal Interpretation
- ◆ Stack Panels for Individual Signal Display
- ◆ Measure Time and Y-Axis Values Using Location Indicators
- ◆ Rollover Statistics for All Signals
- ◆ Digital and Analog Data Saved in an Open HDF5 Scientific Format that is Easily Imported into Analysis Packages
- ◆ Support for Spectral Analysis
- ◆ Virtual Channel Support
- ◆ Custom Control of TTL Lines



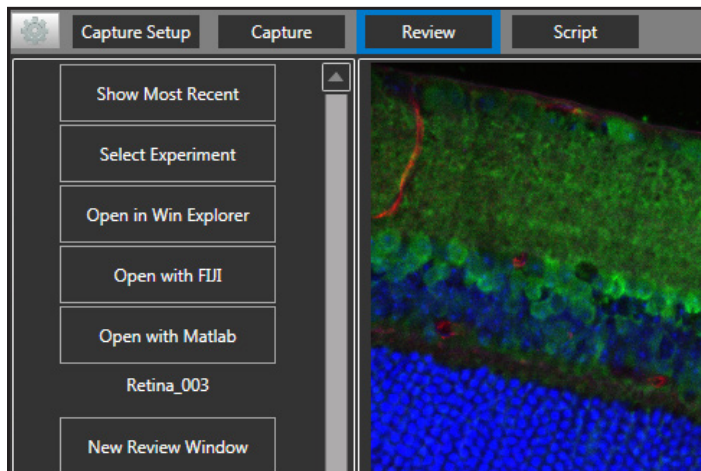
Top: ThorSync recording of tethered *Drosophila* flight to study rapid steering maneuvers around looming stimuli. The tachometer to monitor wingbeat frequency (AI 0) is timed alongside the visual patterns presented to the *Drosophila* (AI 2: ai2, frame number; AI 3: AuxPhidgAO1, pattern type), left and right wing stroke amplitude (AI 6: LW and AI 7: RW), and image acquisition (AI 1: AuxPhidgAO0).

Bottom: GCaMP6f fluorescence expression ($\Delta F/F$) in an active descending neuron during the experiment.⁹

Third-Party Integration

Export data or run third-party scripts directly using ThorImageLS, which standardizes and streamlines automated acquisition and analysis processes.

- ◆ Launch and Immediately Open Files in Fiji/ImageJ or MATLAB® with a Quick Connect Button in the ThorImageLS Viewer
- ◆ Create ThorImageLS Scripts that Execute ImageJ and MATLAB® (m-files®) Scripts Either Synchronously or Asynchronously
- ◆ Simplified Hardware Integration Through Third-Party Scripts
- ◆ Open SDKs Enable Users to Code Their Own Device Plugins



From the Review tab, export acquired data into Fiji or MATLAB®.

Open Source

ThorImageLS is provided with every Thorlabs microscope purchase. Full customization of software features and performance is made possible with open-source availability. Contact us at ImagingTechSupport@thorlabs.com for ThorImageLS source code and technical support.



Specifications

Compatibility					
Microscopes	<ul style="list-style-type: none"> ◆ Bergamo® (Upright & Rotating) ◆ Confocal ◆ Veneto® (Inverted) ◆ Hyperspectral Imaging System 				
Imaging Modalities	<table border="0" style="width: 100%;"> <tr> <td style="vertical-align: top; width: 50%;"> <p>Laser Scanning</p> <ul style="list-style-type: none"> ◆ Two Photon ◆ Three Photon ◆ Confocal ◆ DIC ◆ Dotd ◆ Fluorescence </td> <td style="vertical-align: top; width: 50%;"> <p>Widefield</p> <ul style="list-style-type: none"> ◆ Epi-Illumination: <ul style="list-style-type: none"> – Reflected Light – Fluorescence ◆ Trans-Illumination: <ul style="list-style-type: none"> – Hyperspectral with KURIOS® – DIC – Dotd – Darkfield & Brightfield </td> </tr> </table>	<p>Laser Scanning</p> <ul style="list-style-type: none"> ◆ Two Photon ◆ Three Photon ◆ Confocal ◆ DIC ◆ Dotd ◆ Fluorescence 	<p>Widefield</p> <ul style="list-style-type: none"> ◆ Epi-Illumination: <ul style="list-style-type: none"> – Reflected Light – Fluorescence ◆ Trans-Illumination: <ul style="list-style-type: none"> – Hyperspectral with KURIOS® – DIC – Dotd – Darkfield & Brightfield 		
<p>Laser Scanning</p> <ul style="list-style-type: none"> ◆ Two Photon ◆ Three Photon ◆ Confocal ◆ DIC ◆ Dotd ◆ Fluorescence 	<p>Widefield</p> <ul style="list-style-type: none"> ◆ Epi-Illumination: <ul style="list-style-type: none"> – Reflected Light – Fluorescence ◆ Trans-Illumination: <ul style="list-style-type: none"> – Hyperspectral with KURIOS® – DIC – Dotd – Darkfield & Brightfield 				
Applications	<ul style="list-style-type: none"> ◆ Photostimulation <ul style="list-style-type: none"> – Simultaneous Multi-Point (Spatial Light Modulator) – Sequential Multi-Point (Galvo-Galvo) – Full Field ◆ Rapid Excitation Wavelength Switching with Tiberius® ◆ Electrophysiology Signaling ◆ Fast Deep-Tissue Scanning 				
Computer	<ul style="list-style-type: none"> ◆ Microsoft® Windows® 10 (64 Bit) ◆ Minimum Specifications: Intel® Core i5 2.7 GHz Processor, 8 GB RAM 				
Features ^a					
Acquisition	<ul style="list-style-type: none"> ◆ Mosaic Large-Area Imaging ◆ High-Speed ROI Masking to Eliminate Photodamage Outside Resonant Imaging Areas ◆ Fast Z-Stack/Volume Acquisition ◆ Multi-Modal Imaging Compatibility: <table border="0" style="width: 100%; margin-left: 20px;"> <tr> <td>– Resonant-Galvo-Galvo</td> <td>– Galvo-Resonant</td> </tr> <tr> <td>– Galvo-Galvo</td> <td>– Thorlabs' and Some Third-Party Scientific Cameras</td> </tr> </table> ◆ Data Acquisition Synced with Hardware Inputs and Timing Events ◆ Intuitive Scripting Tool for Customized Image Acquisition ◆ Real-Time ROI Analysis and Image Correction ◆ Customizable Scan Area Modes ◆ Acquire in 4D, 3D, 2D, Line, Polyline and Point ◆ User-Defined Laser Power Ramping in Z ◆ Unlimited Data Size Acquisition (Capture to Hard Drive Capacity) 	– Resonant-Galvo-Galvo	– Galvo-Resonant	– Galvo-Galvo	– Thorlabs' and Some Third-Party Scientific Cameras
– Resonant-Galvo-Galvo	– Galvo-Resonant				
– Galvo-Galvo	– Thorlabs' and Some Third-Party Scientific Cameras				
Settings	<ul style="list-style-type: none"> ◆ Multi-Column Customizable Workspace ◆ Multi-User Settings Saved for Shared Workstations 				
Export	<ul style="list-style-type: none"> ◆ Non-Proprietary File Formats <ul style="list-style-type: none"> – TIFF – OME TIFF – RAW – XML ◆ Interface with MATLAB® Scripts & Fiji/ImageJ Macros 				
Support	<ul style="list-style-type: none"> ◆ Lifetime Software Technical Support ◆ Open-Source Access to Full Application Code via Cloud-Based Git Servers ◆ Multiple Feature Updates per Calendar Year 				

a. For a complete list of software features and user interface upgrades, visit our website at www.thorlabs.com.

Worldwide Support



Thorlabs, Inc.
Newton, New Jersey
Phone: 1-973-300-3000
Email: sales@thorlabs.com

Thorlabs Vytran® Division
Morganville, New Jersey
Phone: 1-973-300-3000
Email: sales@thorlabs.com

Thorlabs Measurement Systems (TMS) - NJ
Blairstown, New Jersey
Phone: 1-908-362-6200
Email: tms-sales@thorlabs.com

Thorlabs Measurement Systems (TMS) - NH
Londonderry, New Hampshire
Phone: 1-973-300-3000
Email: tms-sales@thorlabs.com

Thorlabs Quantum Electronics (TQE)
Jessup, Maryland
Phone: 1-973-300-3000
Email: sales-TQE@thorlabs.com

Thorlabs Imaging Systems
Sterling, Virginia
Phone: 1-703-651-1700
Email: imagingsales@thorlabs.com

Thorlabs Spectral Works (TSW)
West Columbia, South Carolina
Phone: 1-973-300-3000
Email: sales@thorlabs.com

Thorlabs Ultrafast Optoelectronics
Ann Arbor, Michigan
Phone: 1-973-300-3000
Email: sales@thorlabs.com

Thorlabs Laser Division - CO
Lafayette, Colorado
Phone: 1-973-300-3000
Email: sales@thorlabs.com

Thorlabs Crystalline Solutions (TCS)
Santa Barbara, California
Phone: 1-973-300-3000
Email: sales@thorlabs.com

Thorlabs Canada
Phone: 1-973-300-3000
Email: sales@thorlabs.com

Thorlabs Ltda, Brazil
Phone: +55 (16) 3413 7062
Email: brasil@thorlabs.com

Thorlabs Ltd.
Phone: +44 (0)1353 654440
Email: sales.uk@thorlabs.com

Thorlabs SAS France
Phone: +33 (0) 970 444 844
Email: sales.fr@thorlabs.com

Thorlabs GmbH / Thorlabs Lübeck
Phone: +49 (0) 8131 5956-0
Email: europe@thorlabs.com

Thorlabs Elliptec® GmbH
Phone: +44 (0)1353 654440
Email: sales.de@thorlabs.com

Thorlabs Vytran® Europe
Phone: +44 (0) 1392-445777
Email: vytran.uk@thorlabs.com

Thorlabs Sweden AB
Phone: +46 31 733 30 00
Email: scandinavia@thorlabs.com

Thorlabs China Ltd.
Phone: +86 (0)21-60561122
Email: chinasales@thorlabs.com

Thorlabs Japan
Phone: +81-3-6915-7701
Email: sales@thorlabs.jp